

## ORGANO-NG506 Assembling

### Assembling bolts:

1629 6x70 = 24

931 8x130 = 4

1629 5x50 = 4

931 8x110 = 4

H17tx 8x40 = 4

R89096 5x30 = 32

9021 M8 = 16

985 -8 = 32

7380 8x40 = 12

### **ASSEMBLY STEPS**

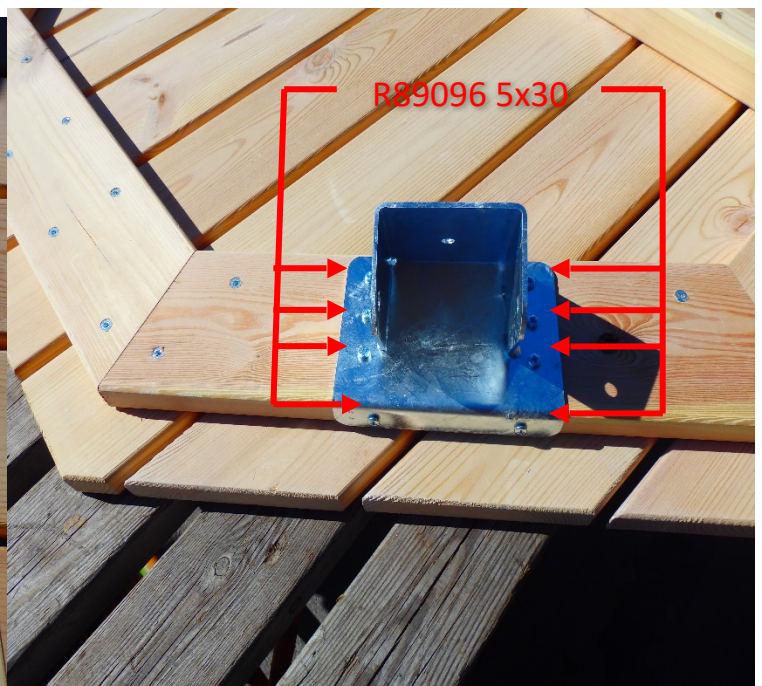
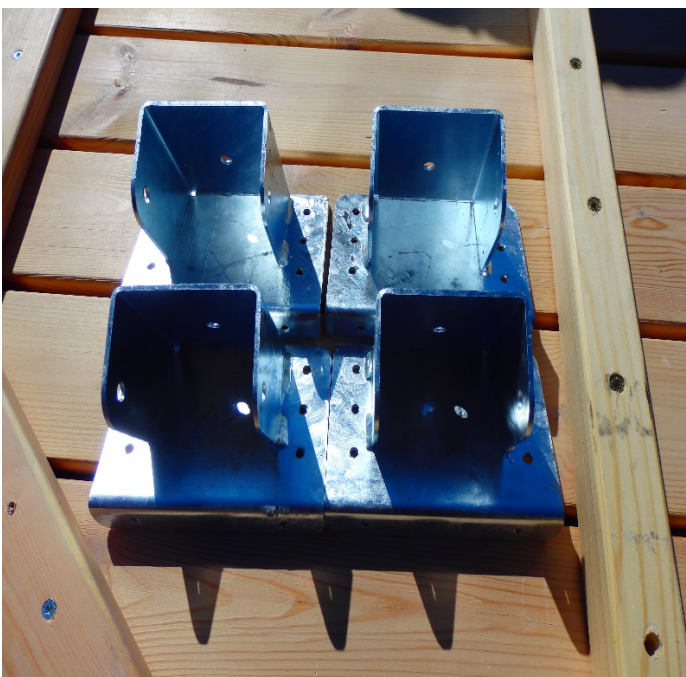
#### **1.Leg holding metal assembling to table**

##### Parts:

R89096 5x30 = 32

Octagonal table top = 1

Leg holding metal = 4



## 2.wood legs assembling to metal parts

### Parts:

H17tx 8x40 = 4

931 8x110 = 4

985-8 = 4

9021 M8 = 8



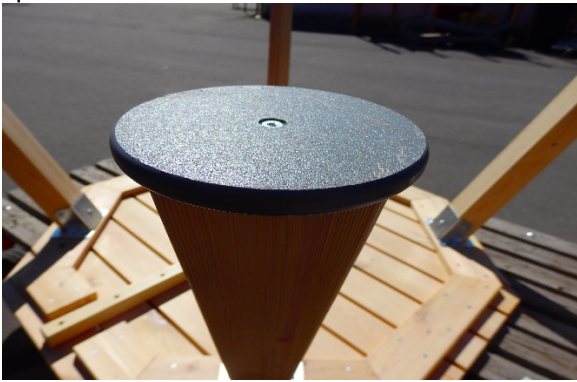
## 3.Plastic leg cover assembling

### Parts:

1629 5x50 = 4

Plastic round peace = 4

Red.Nr.01  
Spēkā no 13.06.2020



#### 4. Table seat holder assembling

**Parts:**

7380 8x40 = 12

985 - 8 = 12

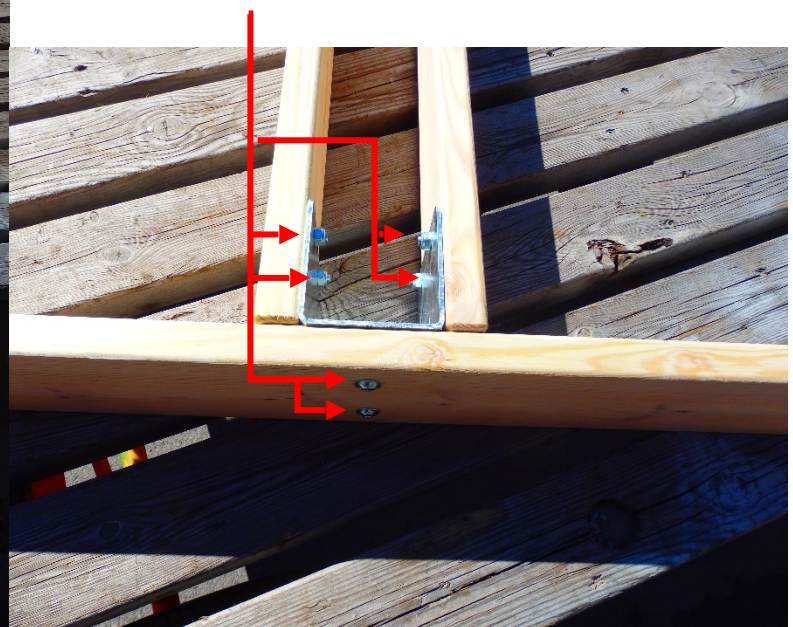
Rectangle wood = 2

Rectangle wood LEFT/RIGHT = 4



**7380 8x40 = 12**

**985-8 = 12**



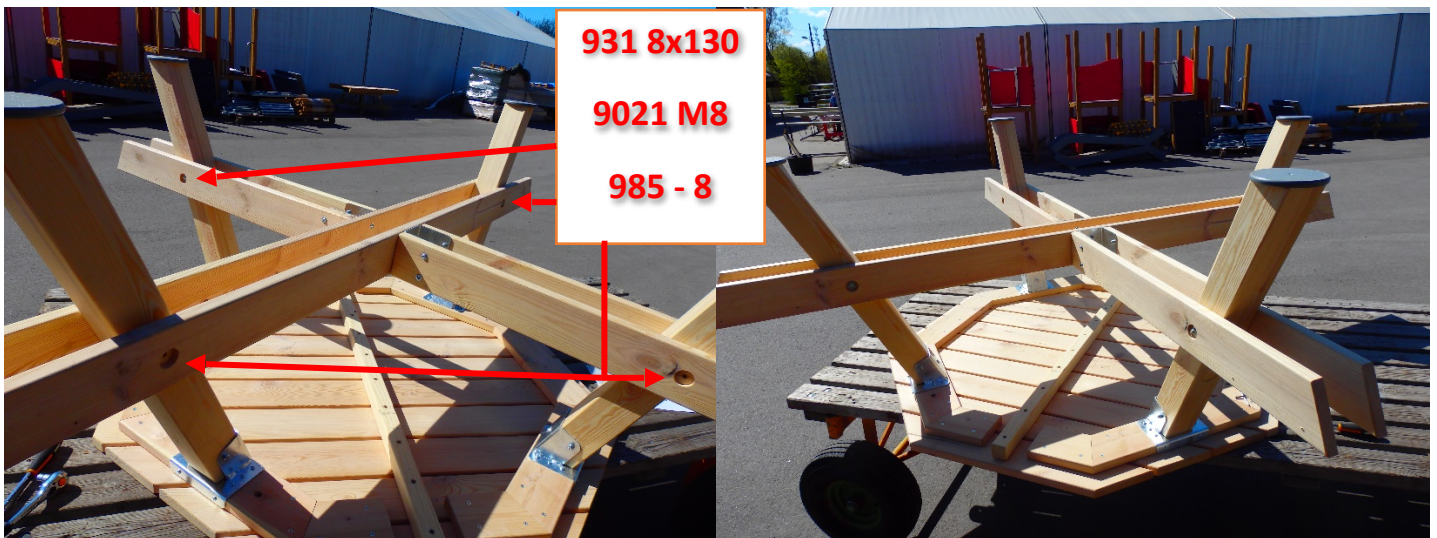
## 5. Attaching seat holder to table

### Parts:

931 8x130 = 4

985-8 = 4

9021 M8 = 8



## 6. Attaching seats to table

### Parts:

1629 6x70 = 24

Seats = 4

Red.Nr.01  
Spēkā no 13.06.2020

