

Mounting instruction large play equipment „silva 3“

Item-No. 51 5522 601

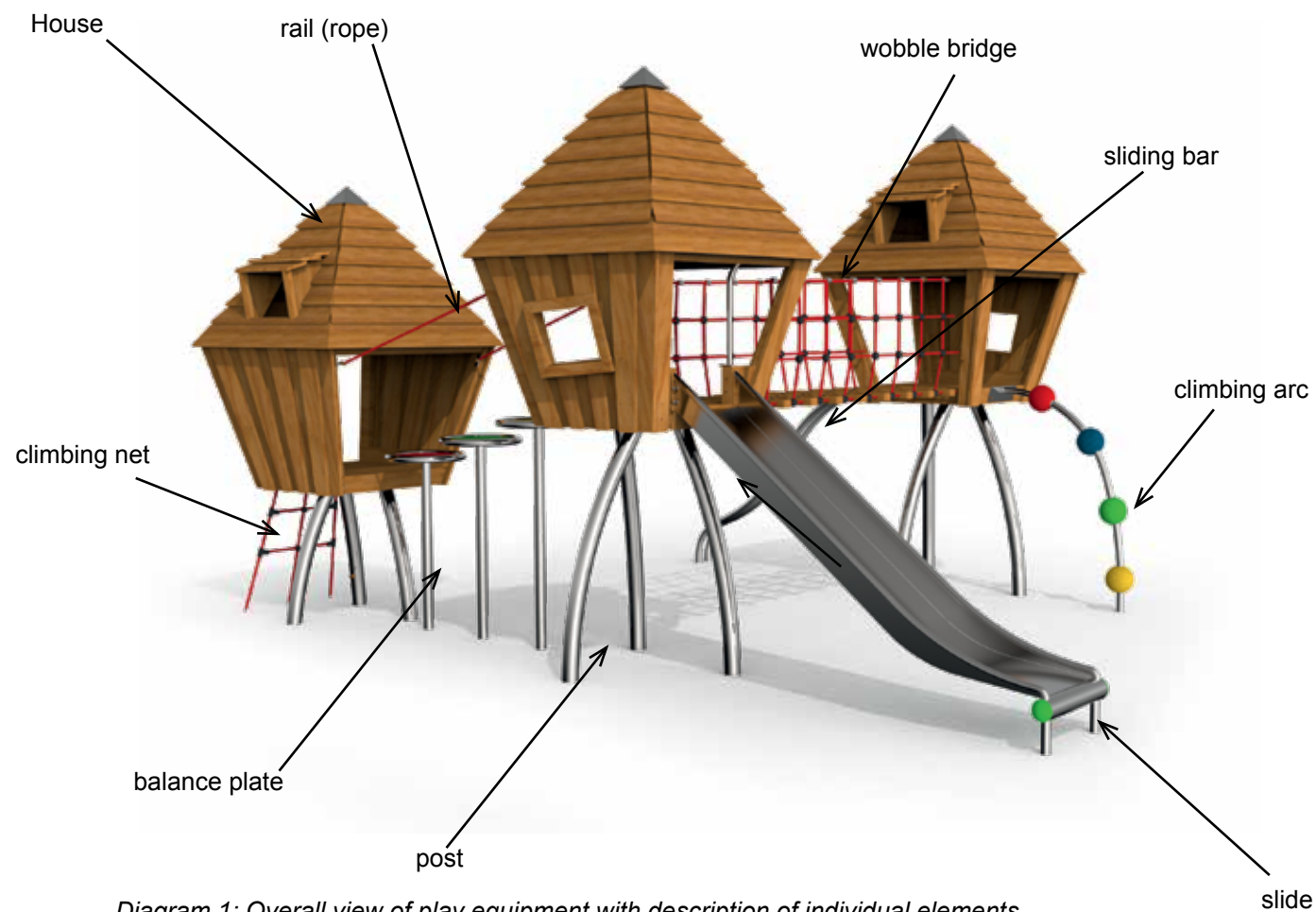


Diagram 1: Overall view of play equipment with description of individual elements

Mounting instruction large play equipment „silva 3“

Item-No. 51 5522 601

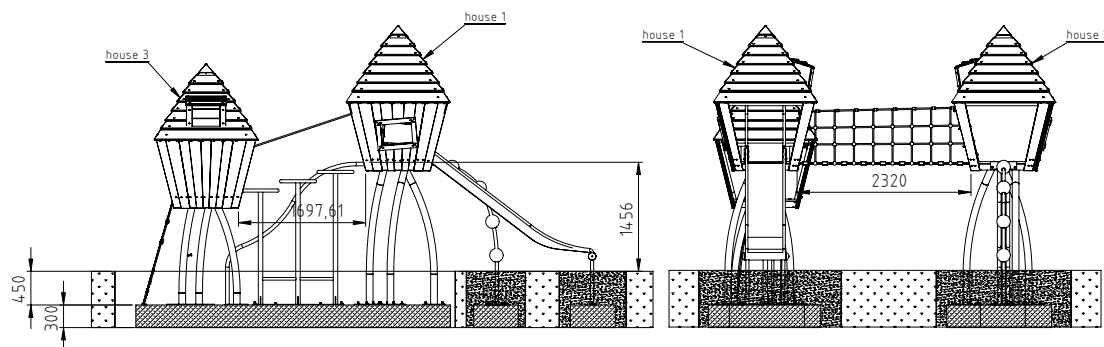


Diagram 2a: Rear view with dimension details „silva 3“

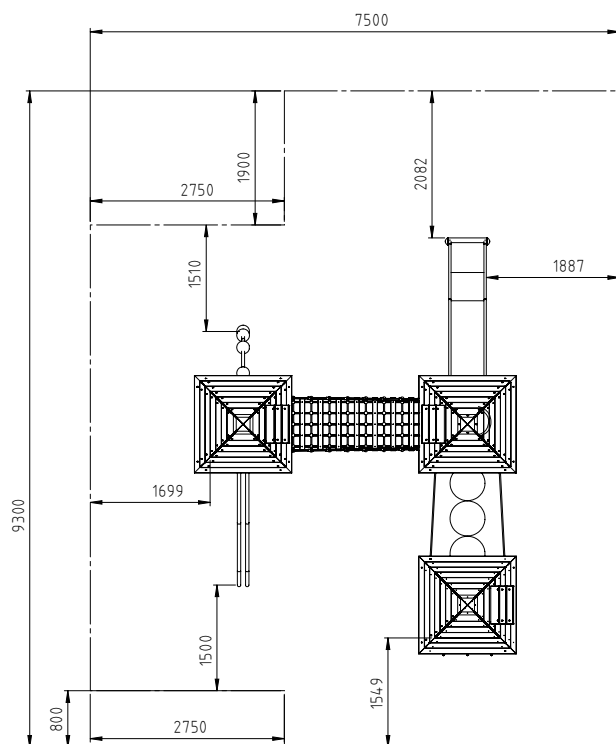


Diagram 3: Minimum space

1. Select the play equipment location in consideration of the required safety area (see diagram 3: 9300x7500mm).
 2. Carry out excavation work for 5 foundations as shown in Diagram 2b. After excavation, compress the foundation floor.
Note: Cover the foundation holes with the safety cover required for the height of fall indicated. The combination equipment is built in on the play level. Pay attention to items marked „game level“ of play equipment!
 3. Setup the main foundation (LxBxH 4200x1500x300mm), the second foundation (LxBxH 1400x1400x300mm), the foundation for sliding bar and climbing arc (LxBxH 600 x 600 x 300mm), foundation for the slide (LxBxH 1000x600x300mm) acc. to the dimensions indicated in diagram 2a and 2b in the quality class C 20/25 with horizontal reinforcement.
- Reinforcement plan:**

Concrete foundation with reinforcement

Main foundation: BSt 500S

Ever 4 stirrups Ø 8 mm lengthwise and cross

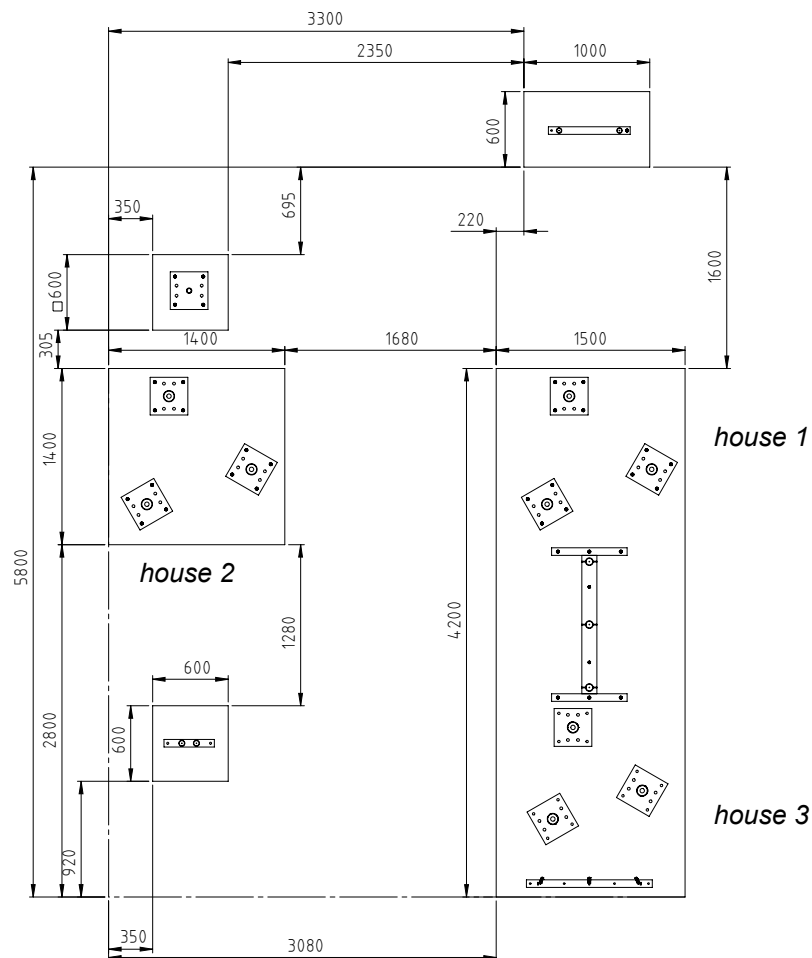
Concrete cover $h' = 3$ cm

Concrete quality class C 20/25

Foundations for attachment parts are no-reinforced
4. After a setting period of 10-14 days, depending on weather conditions and foundation size - clean the surface of the foundations and start with the installation of the combination equipment.

Mounting instruction large play equipment „silva 3“ Foundation

Item-No. 51 5522 601



5. Place the premounted construction of the posts with a height of 1500 mm as described in diagram 4b and 2b on the foundation. The Houses 1 & 2 are described in diagram 2b)

Note: Do not screw the base plates onto the foundations yet!

6. Place the pre-mounted house 1+2 on the connection plate and fix it. The connection elements for the wobble bridge have to face each other. The closed walls have to be on the outside.

7. Place the small post combination on the position of house 3. Make sure that the connections for the rope rail face each other.

8. Place the pre-mounted house 3 on the connection plate and fix it.

9. Place the balanceplates between house 1 and 3, so that the plates will make three stairs.

Note: Do not screw the base plates onto the foundations yet!

10. Mount the rope rail between house 1 and house 3 using the shackles attached in the delivery.

11. Connect the sliding bar, the slide and the climbing arc with the towers as described in diagram 1 and 4b and fix it (screws included in delivery).

12. Connect the climbing net with the house at the intended locations using the shackles (3x) included in the delivery.

13. Mount the wobbly bridge with the towers at the intended locations. Please fasten the parts using the shackles (18 pcs.) including in the delivery.

14. Align the play equipment more on the foundations.

Note: Avoid sagging of the wobbly bridge and the climbing net.

Diagram 2b: Top view with foundations „silva 3“

Mounting instruction large play equipment „silva 3“

Addition of the single elements

Item-No. 51 5522 601

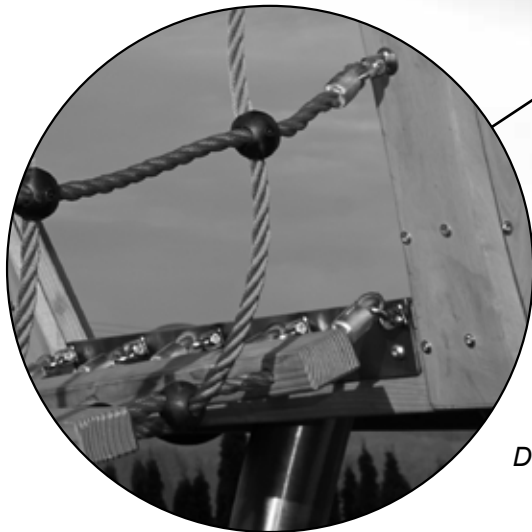


Diagram 4a: wobble bridge

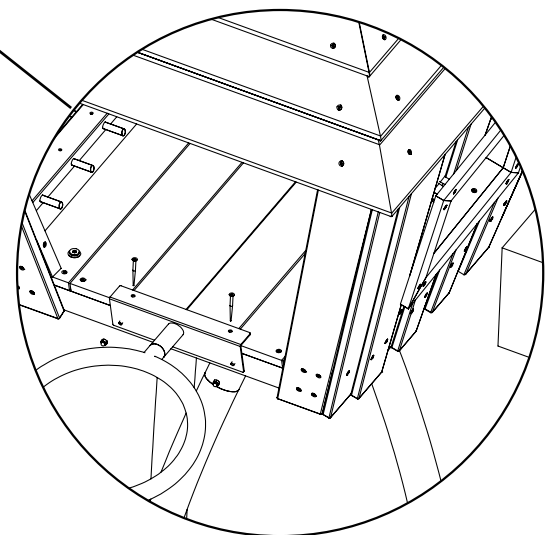


Diagram 4b: sliding bar, climbing arc

Mounting instruction large play equipment „silva 3“

Item-No. 51 5522 601

15. Drill holes into all foundations and screw the play equipment into the foundations with the included heavy-duty dowels.
16. Fill up and compress the holes between the foundation and the foundation hole with the excavation.
17. Seal the foundation with the safety cover required for the height of fall indicated.
Critical drop height: 1500 mm.
Recommended surface material: sand, wood chip, gravel, synth. fall protection.
18. Do not allow children to use the equipment before the installation has been finished.
19. After 3 months, check the screws at the joints and retighten them if necessary.

Attention: If the play equipment has been incompletely installed or partly dismantled when carrying out maintenance and repair work, this may lead to particular risks of injury for the user. For this reason, make clearly visible that the equipment shall not be used in such cases.

NOTE: Play equipment, which contain components made of stainless steel should not come with „normal“ steel parts in contact. Those steel parts may rub off and leave small steel particles in combination with moisture brown rust stains. If such corrosion occur on stainless steel parts, they are fine to remove with an abrasive (240 grit).

Please take care when transporting and setting up the fact that the components are made of stainless steel with no „normal“ steel parts in contact.

In order to preserve a good visual appearance of your stilum playground equipment over a long period one should take care of maintenance of the stainless surface even despite of their corrosion resistance. Especially areas, which can not be reached by rainfall, should be frequently cleaned from dirt and deposits due to air pollution and dirt caused by the atmosphere. Light soiling can easily be removed by using a high pressure cleaner. For persistent deposits use a clean cloth moistened with a special liquid cleaner (e.g. on phosphoric acid) and rinse off with clear water after a short application time. During cleaning with mild abrasive components, only wipe over stainless steel surface in polishing direction. For heavily soiled surfaces, polishes can be used (e.g. for cleaning chrome on cars) or for greasy and oily dirt alcoholic cleaning agents and solvents (e.g. ethyl alcohol, isopropyl alcohol or acetone). However, it should be noted that the dissolved soiling is not spread over the surface again. Do not use any chloride or hydrochloric containing cleaning products nor scouring powder, bleaching - or silver polish cleaner. Cleaning intervals depend on type and degree of soiling as well as on demands made on optical characteristics. Therefore cleaning is advisable at intervals of six to twelve months – whereby in the case of strong soiling it is appropriate to clean the playground equipment at intervals of 3 to 6 months.

Mounting instruction large play equipment „silva 3“

Item-No. 51 5522 601

MAINTENANCE OF WOODEN ELEMENTS

To ensure a long life of stilum playground equipment, wooden surfaces should be regularly re-glazed. This provides the wooden surfaces with the necessary protection and preserves the look. Areas which are not exposed to rain should be regularly freed from deposits.

The cleaning intervals depend on the degree and type of soiling as well as on the exigencies on cleanliness. It is recommended to clean and / or glaze at every 6 to 12 months, or to shorten the cleaning interval to 3 to 6 months if the weather conditions are bad.

LASUR APPLICATION

Use a soft and flat brush or / and a glaze application roll to paint.

The wood should be cleaned a few hours before glazing. That can be done with mild javel water, which should in any case be rubbed off afterwards. For resistant dirt use a wood cleaner. Eventually a light abrasion is necessary. If water-based detergents are used for cleaning, please ensure that the wood elements are thoroughly dried before the glazing is done.

Always brush in one direction, so that the glaze can spread evenly. Apply very thinly!

Remove glaze with a soft cotton cloth.

Then let the freshly glazed wood dry for at least one day and prohibit the use of the equipment for this duration.