

Mounting instructions for slackline „lixus“ modular unit 1

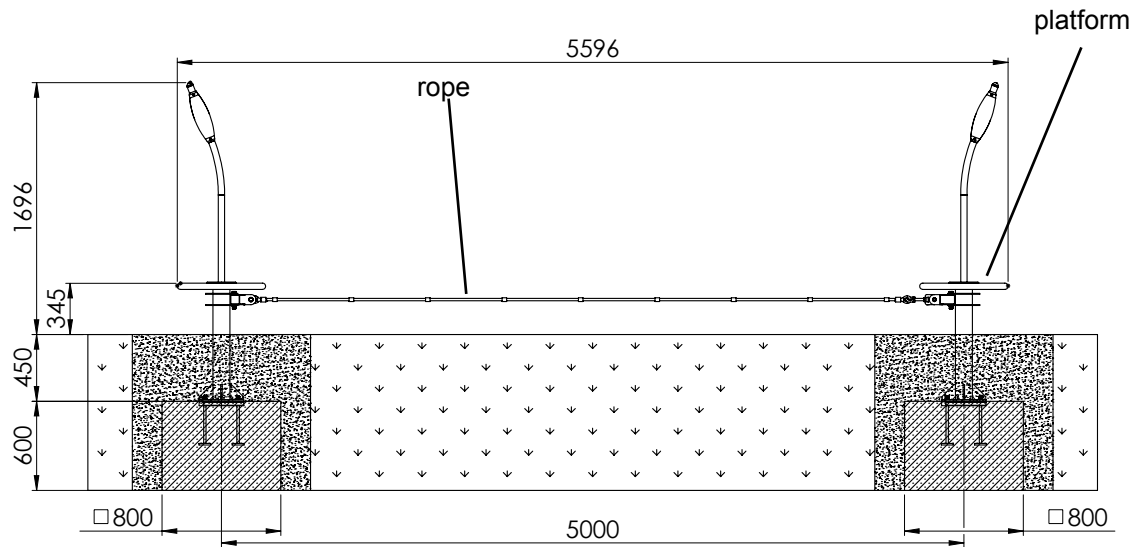
Item-No. 51 6510 402



Diagram 1: Overall view of the play equipment

Mounting instructions for slackline „lixus“ modular unit 1

Item-No. 51 6510 402



IMPORTANT: The distance dimensions must be kept exactly!

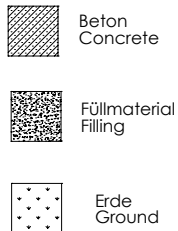


Diagram 2: Side view with dimension details „lixus“

1. Select the play equipment location in consideration of the required safety area (see Diagram 3: 8600 x 3600mm).
2. Carry out excavation work the foundation as shown in Diagram 2. After excavation, compress the foundation floor.
Note: The slackline is built in on the play level. Pay attention to items marked „game level“ of play equipment!
3. Set up the concrete foundations acc. to the dimensions indicated (LxWxH 800 x 800 x 600mm) with central, horizontal reinforcement (BST 500 S) in the quality class C 20/25. It shed the supplied anchor bolts with the foundation that the upper angle frame is horizontal and flush with the foundation surface.

Reinforcement plan: Concrete foundation with reinforcement

Main foundation: BSt 500S

Ever 4 stirrups Ø 8 mm lengthwise and cross

Concrete cover $h' = 3$ cm

Concrete quality class B25

4. After a setting period of 10-14 days, depending on weather conditions and foundation size, clean the surface of the foundation.
5. Put the poles of the play equipment on the foundation with the correct distance and screw it with the anchor bolts included in the delivery.
Note: Do not screw the ropes yet, but take care of the exact distances of the posts (5000 mm, measured from the middle of the post).

Mounting instructions for slackline „lixus“ modular unit 1

Item-No. 51 6510 402

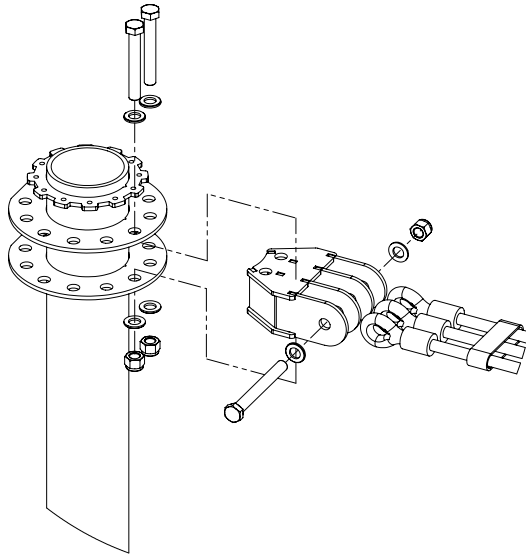
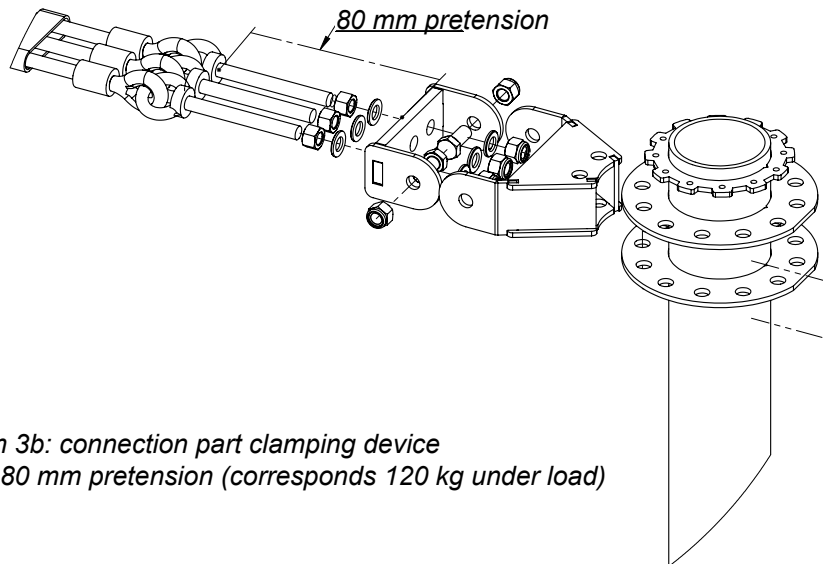


Diagram 3a: connection part fixed end

6. Fill up and compress the holes between the foundation and the foundation hole with the excavation.
7. Connect the ropes at the ends with the platform, stretch it and lock it with the nuts included in the delivery (acc. to diagram 3a).
8. Fixation of the ropes at the clamping device acc. to diagram 3b. Claim the ropes on a distance dimension of 80 mm.

Attention: The pre-mounted screws at the sides of the swivel appliance should not be fixed completely. It is necessary that it still can move!



*Diagram 3b: connection part clamping device
Exactly 80 mm pretension (corresponds 120 kg under load)*

Mounting instructions for slackline „lixus“ modular unit 1

Item-No. 51 6510 402

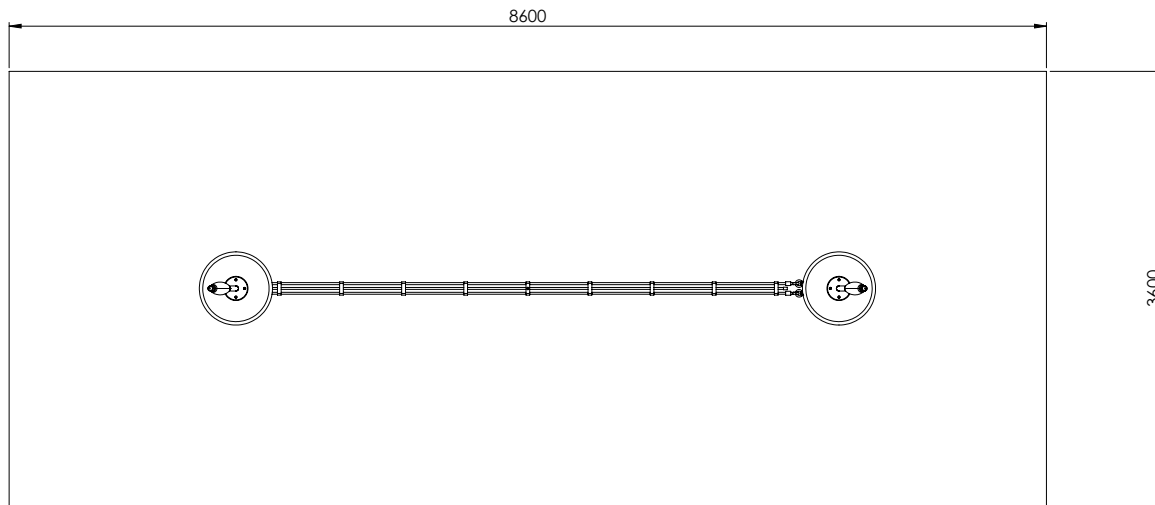


Diagram 3: Top view „lixus“

9. Critical drop height: 350 mm

Recommended surface material: optional

The impact area must be free of any sharp-edged or dangerously protruding parts and must be installed in such a way that it does not create a trap.

10. Do not allow children to use the equipment before the installation has been finished.

11. During the first days of usage, it is possible that the rope elongates. A few days after the first use, check the ropes and if necessary re-stress the rope.

Note: We suggest to elongate the rope during winter with month below freezing point to prevent extra burdens to the foundations and the platforms.

Maximum load: 120 kg

Attention: If the play equipment has been incompletely installed or partly dismantled when carrying out maintenance and repair work, this may lead to particular risks of injury for the user. For this reason, make clearly visible that the equipment shall not be used in such cases.

NOTE: Play equipment, which contain components made of stainless steel should not come with „normal“ steel parts in contact. Those steel parts may rub off and leave small steel particles in combination with moisture brown rust stains. If such corrosion occur on stainless steel parts, they are fine with an abrasive (240 grit) to remove.

Mounting instructions for slackline „lixus“ modular unit 1

Item-No. 51 6510 402

Please take care when transporting and setting up the fact that the components are made of stainless steel with no „normal“ steel parts in contact. In order to preserve a good visual appearance of your stilum playground equipment over a long period one should take care of maintenance of the stainless surface even despite of their corrosion resistance.

Especially areas, which can not be reached by rainfall should be frequently cleaned from dirt and deposits due to air pollution and dirt caused by the atmosphere. Light soiling can easily be removed by using a high pressure cleaner.

For persistent deposits use a clean cloth moistened with a special liquid cleaner (e.g. on phosphoric acid) and rinse off with clear water after a short application time. During cleaning with mild abrasive components, only wipe over stainless steel surface in polishing direction.

For heavily soiled surfaces, polishes can be used (e.g. for cleaning chrome on cars) or for greasy and oily dirt alcoholic cleaning agents and solvents (e.g. ethyl alcohol, isopropyl alcohol or acetone).

However, it should be noted that the dissolved soiling is not spread over the surface again.

Do not use any chlorid or hydrochloric containing cleaning products nor scouring powder, bleaching - or silver polish cleaner. Cleaning intervals depend on type and degree of soiling as well as on demands made on optical characteristics. Therefore cleaning is advisable at intervals of six to twelve months – whereby in the case of strong soiling it is appropriate to clean the playground equipment at intervals of 3 to six months.