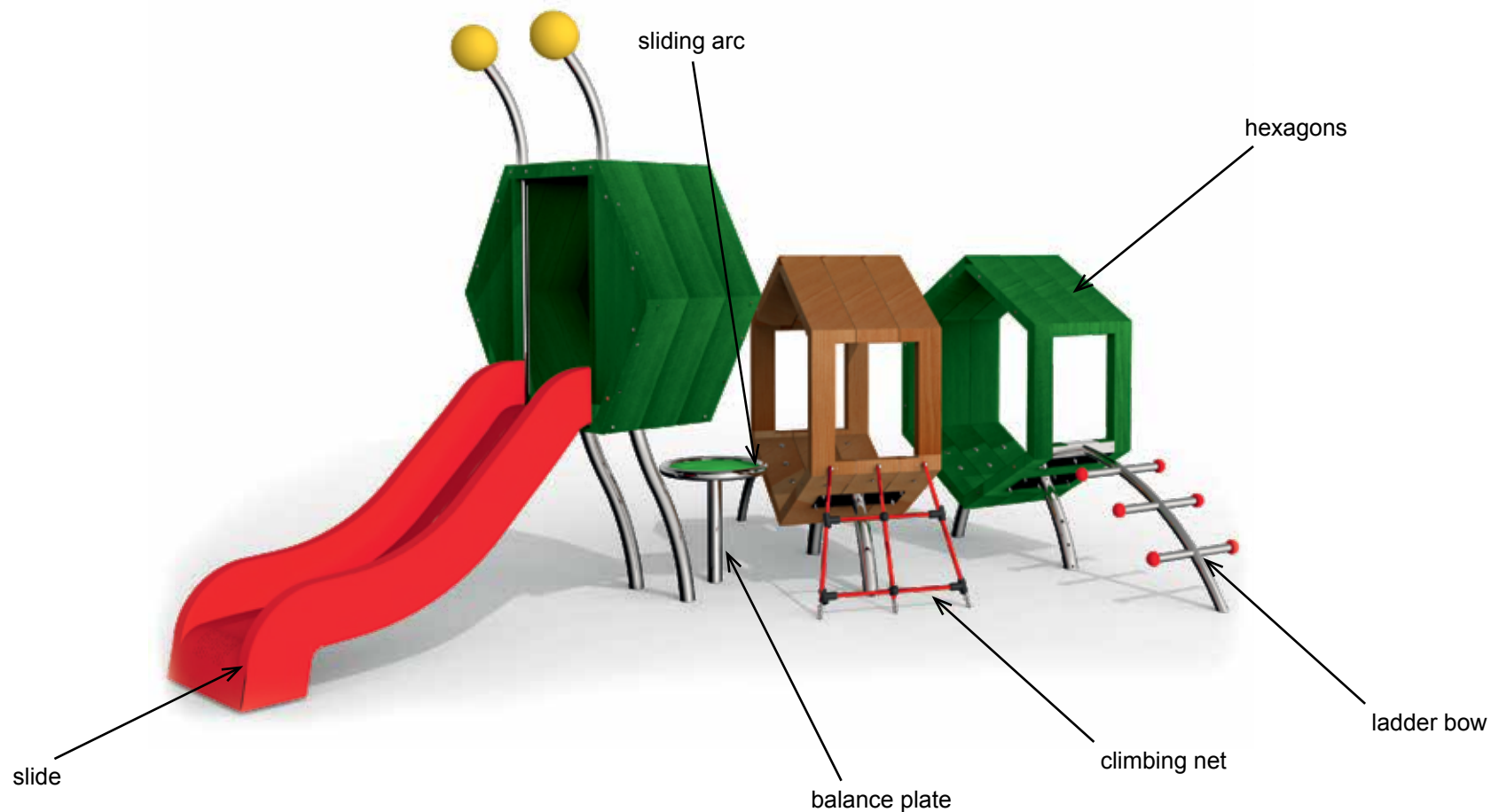


# Mounting instruction climbing equipment „Tamino 1“

Item-No. 51 5559 601



*Diagram 1: Overall view of play equipment with description of individual elements*

# Mounting instruction climbing equipment „Tamino 1“

Item-No. 51 5559 601

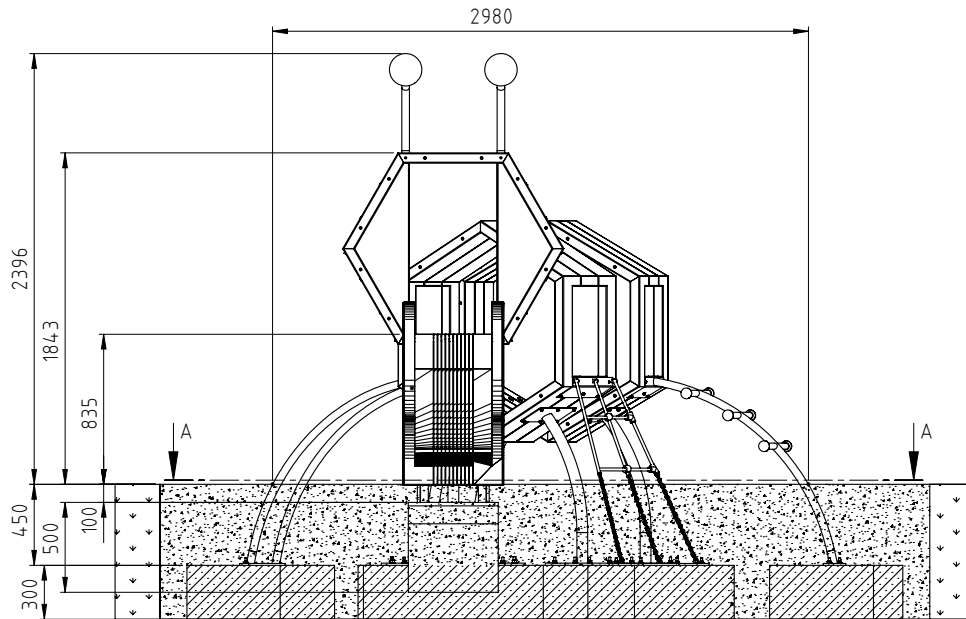


Diagram 2: Side view with dimensions „Tamino 1“

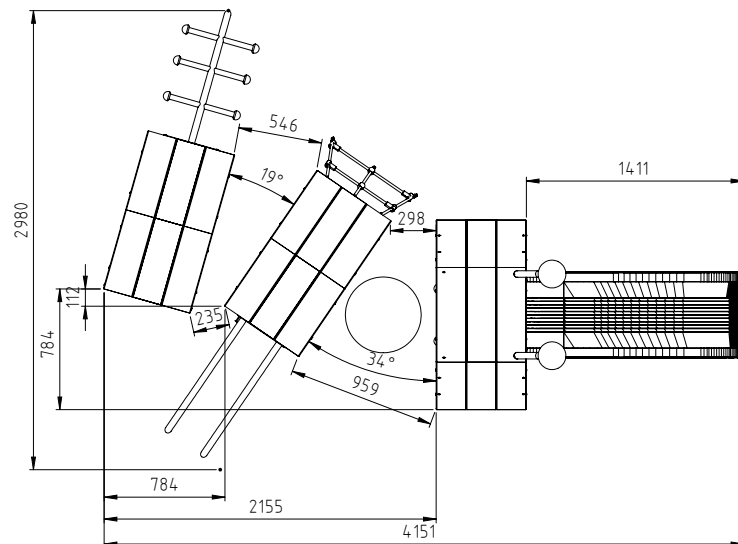


Diagram 3: Position of the elements „Tamino 1“

1. Select the play equipment location in consideration of the required safety area (see diagram 6: 6400 x 7700 mm).
2. Carry out excavation work for 9 foundations as shown in Diagram 2 and 4. After excavation, compress the foundation floor.  
**Note:** The combination equipment is built in on the play level. Pay attention to items marked „game level“ of play equipment!
3. Setup the main foundation (T-form: LxWxH 1000x1353x300mm), and the foundation for the sliding arc and the ladder bow (LxWxH 600 x 600 x 300mm), the foundation for the climbing net (LxWxH 1100 x 300 x 300mm), the foundation of the slide (LxWxH 500 x 300 x 500mm) and the four other foundations acc. to the dimensions indicated in diagram 2 and 3 the quality class C 20/25 with horizontal reinforcement. Insert the foundation anchor of the slide into the concrete mass as shown in diagram 5.

## Reinforcement plan:

Concrete foundation with reinforcement

Main foundation: BSt 500S

Ever 4 stirrups Ø 8 mm lengthwise and cross

Concrete cover h' = 3 cm

Concrete quality class C 20/25

Foundations for attachment parts are no-reinforced

4. After a setting period of 10-14 days, depending on weather conditions and foundation size - clean the surface of the foundations and start with the installation of the combination equipment.

# Mounting instruction climbing equipment „Tamino 1“

Item-No. 51 5559 601

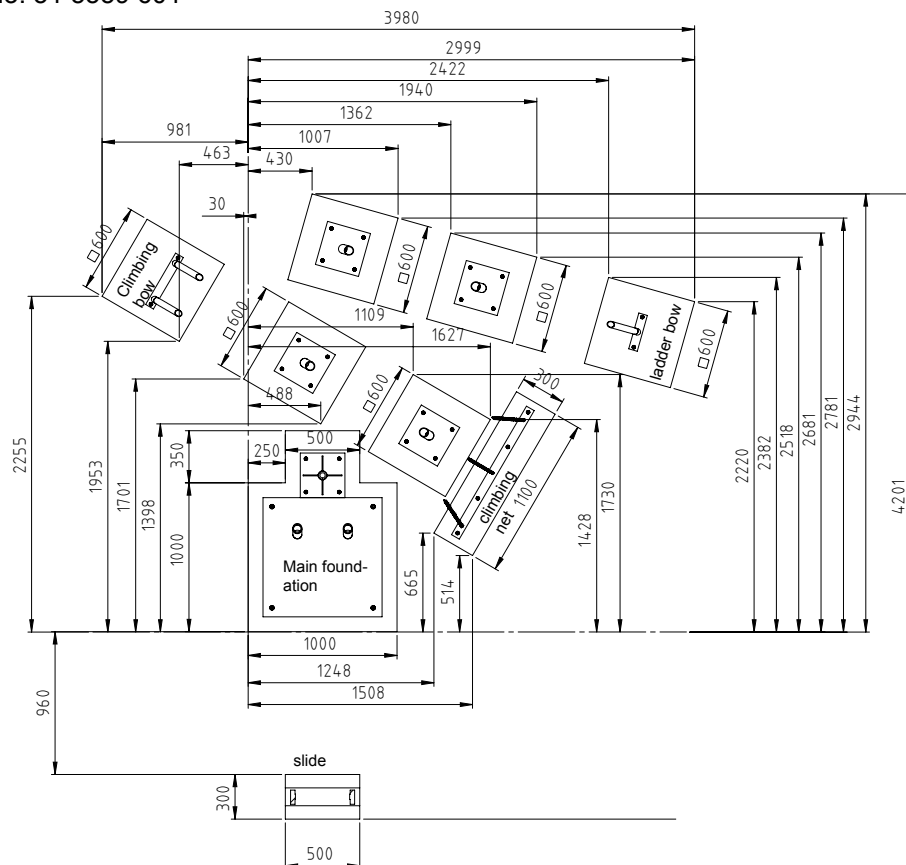


Diagram 4: Position of the foundations

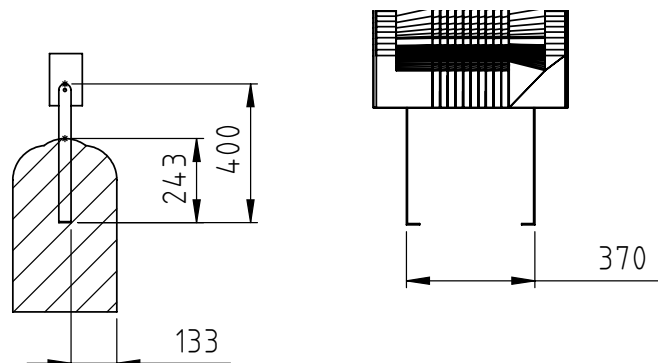
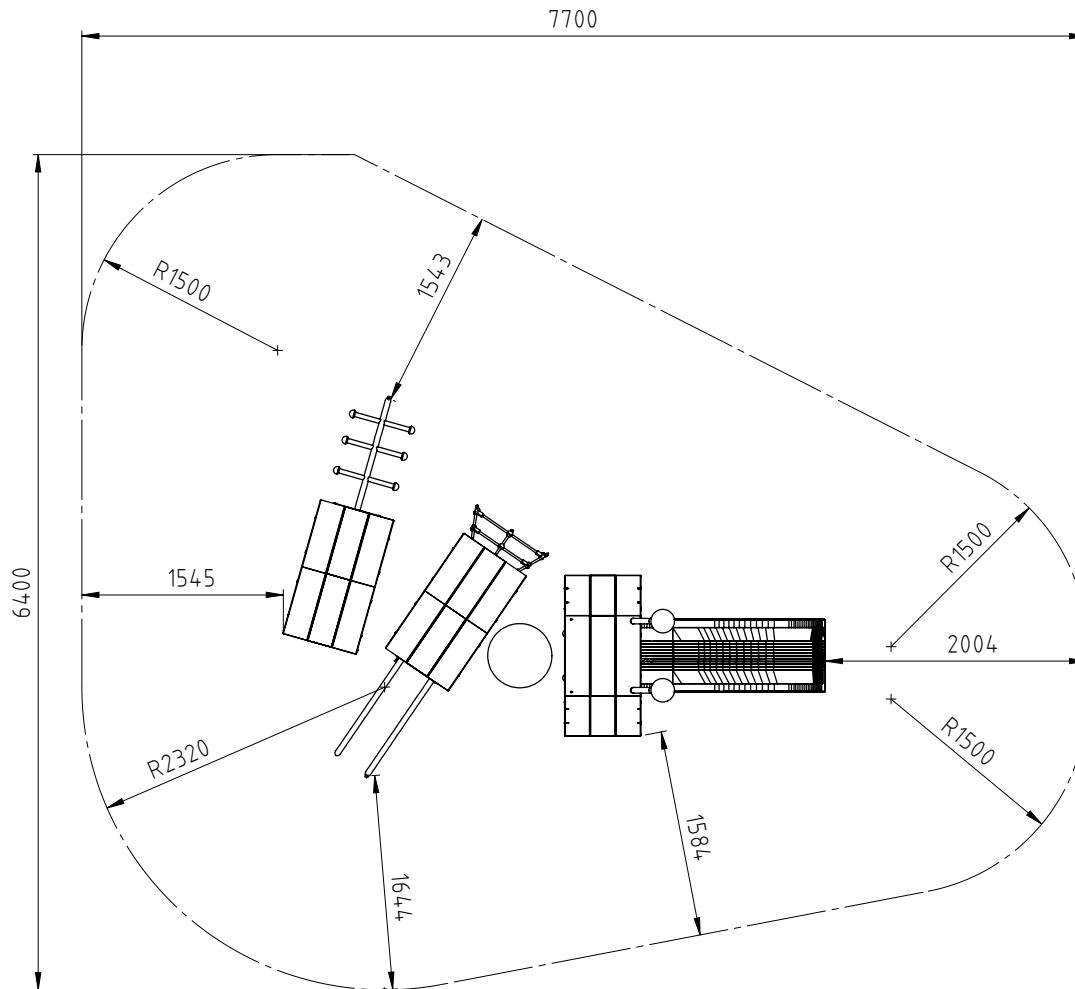


Diagram 5: foundation anchor of the slide

5. Place the head of the catapillar as described in diagramm 1 and 3 onto the foundation.  
**Note: Do not screw the base plates onto the foundations yet!**
6. Place the balance plate and the other hexagons according to the postitions in diagram 3.
7. Add the addition parts (sliding arc, slide, ladder bow and climbing net) as shown in diagram 4 and connect it with the screws included in the delivery.
8. Align the play equipment once more on the foundations.  
**Note:** Avoid sagging of the climbing net.
9. Drill holes into all foundations and screw the play equipment into the foundations with the included heavy-duty dowels.
10. Fill up and compress the holes between the foundation and the foundation hole with the excavation.

# Mounting instruction climbing equipment „Tamino 1“

Item-No. 51 5559 601



11. Seal the foundation with the safety cover required for the height of fall indicated.

**Critical drop height: 840 mm.**

Recommended surface material: grass, sand, wood chip, gravel, synth. fall protection.

12. Do not allow children to use the equipment before the installation has been finished.
13. After 3 months, check the screws at the joints and retighten them if necessary.

**Attention:** If the play equipment has been incompletely installed or partly dismantled when carrying out maintenance and repair work, this may lead to particular risks of injury for the user. For this reason, make clearly visible that the equipment shall not be used in such cases.

**NOTE:** Play equipment, which contain components made of stainless steel should not come with „normal“ steel parts in contact. Those steel parts may rub off and leave small steel particles in combination with moisture brown rust stains. If such corrosion occur on stainless steel parts, they are fine to remove with an abrasive (240 grit).

Please take care when transporting and setting up the fact that the components are made of stainless steel with no „normal“ steel parts in contact.

With every playground equipment with wooden parts might occur desiccation cracks caused by the weather. These desiccation cracks are admissible according to the EN 1176 Bbl 1:2009-1, 4.2.7.6.

Diagram 6: Top view with the minimum space „Tamino 1“

# Mounting instruction climbing equipment „Tamino 1“

Item-No. 51 5559 601

In order to preserve a good visual appearance of your stilum playground equipment over a long period one should take care of maintenance of the stainless surface even despite of their corrosion resistance.

Especially areas, which can not be reached by rainfall should be frequently cleaned from dirt and deposits due to air pollution and dirt caused by the atmosphere.

Light soiling can easily be removed by using a high pressure cleaner.

For persistent deposits use a clean cloth moistened with a special liquid cleaner (e.g. on phosphoric acid) and rinse off with clear water after a short application time. During cleaning with mild abrasive components, only wipe over stainless steel surface in polishing direction.

For heavily soiled surfaces, polishes can be used (e.g. for cleaning chrome on cars) or for greasy and oily dirt alcoholic cleaning agents and solvents (e.g. ethyl alcohol, isopropyl alcohol or acetone).

However, it should be noted that the dissolved soiling is not spread over the surface again.

Do not use any chlorid or hydrochloric containing cleaning products nor scouring powder, bleaching - or silver polish cleaner. Cleaning intervals depend on type and degree of soiling as well as on demands made on optical characteristics. Therefore cleaning is advisable at intervals of six to twelve months – whereby in the case of strong soiling it is appropriate to clean the playground equipment at intervals of 3 to six months.

## MAINTENANCE OF WOODEN ELEMENTS

To ensure a long life of stilum playground equipment, wooden surfaces should be regularly re-glazed. This provides the wooden surfaces with the necessary protection and preserves the look. Areas which are not exposed to rain should be regularly freed from deposits.

The cleaning intervals depend on the degree and type of soiling as well as on the exigencies on cleanliness. It is recommended to clean and / or glaze at every 6 to 12 months, or to shorten the cleaning interval to 3 to 6 months if the wheather conditions are bad.

## LASUR APPLICATION

Use a soft and flat brush or / and a glaze application roll to paint.

The wood should be cleaned a few hours before glazing. That can be done with mild javel water, which should in any case be rubbed off afterwards. For resistant dirt use a wood cleaner. Eventually a light abrasion is necessary. If water-based detergents are used for cleaning, please ensure that the wood elements are thoroughly dried before the glazing is done.

Always brush in one direction, so that the glaze can spread evenly. Apply very thinly!

Remove glaze with a soft cotton cloth.

Then let the freshly glazed wood dry for at least one day and prohibit the use of the equipment for this duration.