

# Mounting instruction bicycle stand „cogo“

Item-No. 512514401



*Diagram 1: Overview*

# Mounting instruction bicycle stand „cogo“

Item-No. 512514401

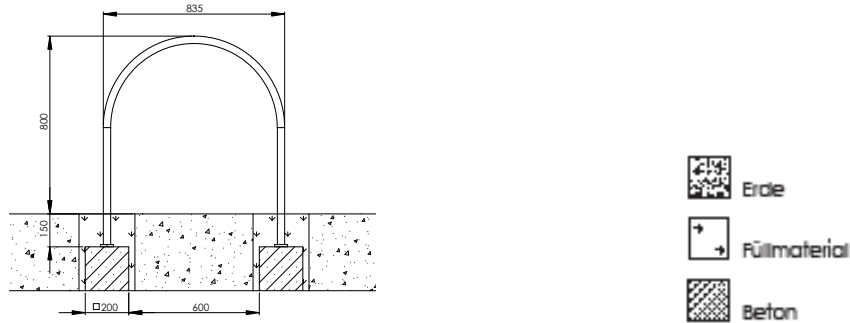


Diagram 2: Foundation

1. Select the location.
2. Carry out excavation work for two foundations as shown in Diagram 2. After excavation, compress the foundation floor.
3. Set up the concrete foundations acc. to the dimensions indicated in the quality class C20/25.
4. After a setting period of 8 -10 days, depending on weather conditions and foundation size, clean the surface of the foundations. Place the base plates of the bench onto the foundations and screw it onto the foundation using the dowels M10 for heavy loads included in the delivery.
5. Seal the foundation with surface material and compress.
6. Do not allow anyone to use the equipment before the installation has been finished.

**Attention:** If the equipment has been incompletely installed or partly dismantled when carrying out maintenance and repair work, this may lead to particular risks of injury for the user. For this reason, make clearly visible that the equipment shall not be used in such cases.

**NOTE:** Equipment, which contain components made of stainless steel should not come with „normal“ steel parts in contact. Those steel parts may rub off and leave small steel particles in combination with moisture brown rust stains. If such corrosion occur on stainless steel parts, they are fine with an abrasive (240 grit) to remove.

Please take care when transporting and setting up the fact that the components are made of stainless steel with no „normal“ steel parts in contact.

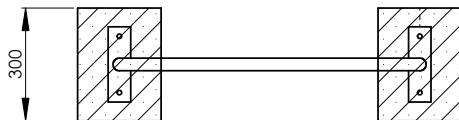


Diagram 3: Top view

# Mounting instruction bicycle stand „cogo“

Item-No. 512514401

In order to preserve a good visual appearance of your stilum playground equipment over a long period one should take care of maintenance of the stainless surface even despite of their corrosion resistance.

Especially areas, which can not be reached by rainfall should be frequently cleaned from dirt and deposits due to air pollution and dirt caused by the atmosphere.

Light soiling can easily be removed by using a high pressure cleaner.

For persistent deposits use a clean cloth moistened with a special liquid cleaner (e.g. on phosphoric acid) and rinse off with clear water after a short application time. During cleaning with mild abrasive components, only wipe over stainless steel surface in polishing direction.

For heavily soiled surfaces, polishes can be used (e.g. for cleaning chrome on cars) or for greasy and oily dirt alcoholic cleaning agents and solvents (e.g. ethyl alcohol, isopropyl alcohol or acetone).

However, it should be noted that the dissolved soiling is not spread over the surface again.

Do not use any chlorid or hydrochloric containing cleaning products nor scouring powder, bleaching - or silver polish cleaner. Cleaning intervals depend on type and degree of soiling as well as on demands made on optical characteristics.

Therefore cleaning is advisable at intervals of six to twelve months – whereby in the case of strong soiling it is appropriate to clean the playground equipment at intervals of 3 to six months.