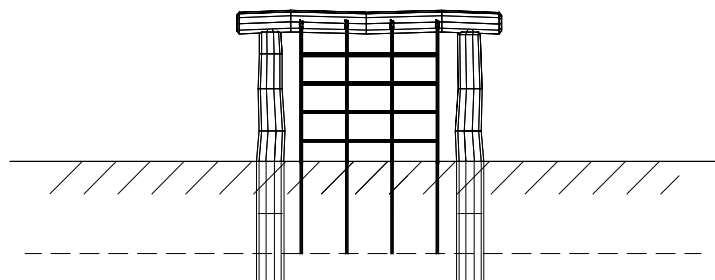


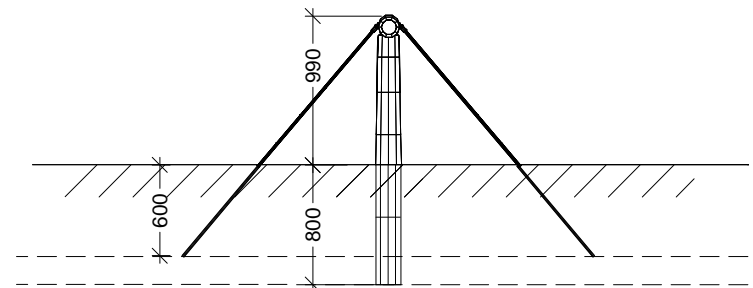
Robinia gallows with 2 nets		
LE no. 20517	MAIN DRAWING	scale : 1:50

DATE	21.06.2004
REV.	A: 14.09.2004
	B: 01.06.2005
	C: 21.08.2006
	D: 25.02.2009



Front

Posts shall be  
cast in place



Side view

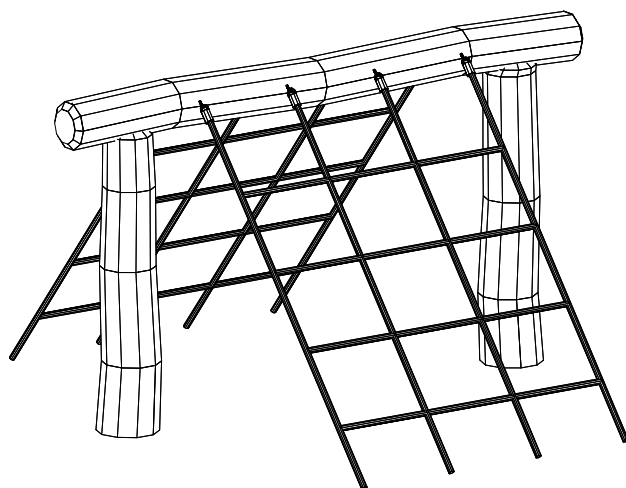
Legs  $\varnothing=160/180$ , boom  $\varnothing=140/160$

Legs - booms gathered according to  
assembly principle 1. Top assembly

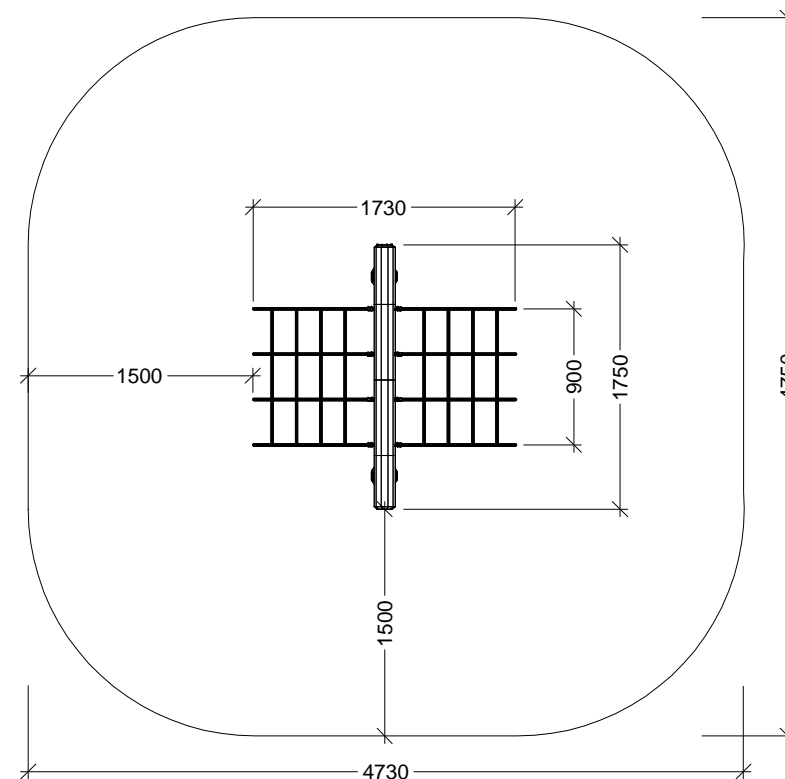
Net is made of 16 mm taifun rope and  
assembled according to mounting principle 9. for net ladders.  
- mesh size 250 x 300 mm.

Concrete 2 sacks of dry concrete / holes for posts as well as nets.

Free fall height: 0.99 m



Perspective



Plan