



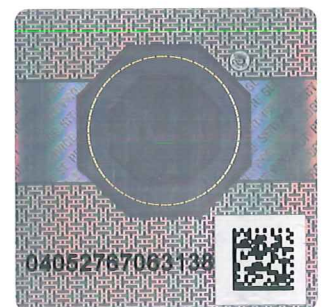
Product Service

CERTIFICATE

No. Z2 15 03 50646 044

Holder of Certificate: Norleg A/SVirkefeltet 1
8740 Brædstrup
DENMARK**Certification Mark:****Product:** Combination playing construction

The product was tested on a voluntary basis and complies with the essential requirements. The certification mark shown above can be affixed on the product. It is not permitted to alter the certification mark in any way. In addition the certification holder must not transfer the certificate to third parties. See also notes overleaf.

Test report no.: 713059531**Valid until:** 2020-03-23**Date,** 2015-03-24
Page 1 of 2
(Harald Bardowicks)



Product Service

CERTIFICATE

No. Z2 15 03 50646 044

Model(s): LE 20109, LE 20390, LE 20407, LE 20415,
LE 20417, LE 20419, LE 20464, LE 20850,
LE 20851, LE 20852, LE 20858, LE 20931,
LE 20932;

Parameters: Type: safety area

LE 20109: 9.3 x 9.2 m
LE 20390: 5.3 x 8.3 m
LE 20407: 6.7 x 9.7 m
LE 20415: 7.3 x 10.4 m
LE 20417: 6.3 x 9.2 m
LE 20419: 8.0 x 11.3 m
LE 20464: 7.1 x 15.8 m
LE 20850: 5.8 x 7.0 m
LE 20851: 9.4 x 4.6 m
LE 20852: 4.63 x 6.14 m
LE 20858: 9.2 x 8.3 m
LE 20931: 9.5 x 11.6 m
LE 20932: 9.5 x 11.6 m

Material: robinia, douglas, larch and stainless steel

Tested according to: EN 1176-1:2008
EN 1176-3:2008

Production Facility(ies): 50646

Page 2 of 2