

## Use, Maintenance and Assembly Instructions



### Wehrfritz FUN XL

Art. No. 94500 (Kindergarten)

Art. No. 97610 (Playground)

1. Safety regulations .....	1
2. Description of Wehrfritz FUN XL .....	1
3. Building work .....	2
4. Assembly Instructions .....	4
5. Safety rules when using the trampoline .....	7
6. Maintenance and repair cycles.....	7
7. Parts list.....	8

## 1. Safety regulations

The trampoline has been tested and corresponds to the DIN EN 1176.

## 2. Description of Wehrfritz FUN XL

### 2.1 Suitable locations for installing the Wehrfritz FUN ground trampoline

The trampoline with the yellow jumping bed should always be installed in a supervised area; the model with the black jumping bed can also be installed in areas with no supervision.

- Schools and kindergartens
- Outdoor and indoor swimming pools
- Leisure parks
- Holiday resorts and camp sites
- Shopping centres
- Indoor play rooms
- Supervised/unsupervised playgrounds (depending on jumping bed)

### 2.2 Product description

*Art. No. 94500, Art. No. 97610*

The Wehrfritz FUN product series belongs to the class of ground trampolines and was consequently designed for flush installation (in a pit).

The yellow jumping bed is designed for use in outdoor areas but must not be used when wearing shoes. Shoes may be worn for jumping on the black belt material.

The trampoline is also suitable for installation in series. We recommend incorporating a sufficient safety distance between trampolines (approx. 150 cm).

### 2.3 Technical specifications and dimensions

- Hot-galvanised profile steel frame, L x W x H: 265 x 265 x 60 cm
- Jumping bed: 199 x 199 cm, yellow jumping bed made of PVC-coated lattice fabric with embossed surface to ensure optimum grip (weatherproof but not vandal-proof); black jumping bed made of sixfold wire-reinforced belt fabric (weatherproof and vandal-proof)
- 72 steel springs (Art. no. 97610 „Playground“) resp. 84 steel springs (Art. no. 94500 „Kindergarten“), hot-dip galvanised
- Bonded impact protection made of 4.5 cm fall-protection slabs, adhesive-attached
- The trampoline is supplied non-assembled

### 3. Building work

#### 3.1 Planning advice

- The form and characteristics of the pit and surrounding area depends on the local conditions.
- If in doubt, enquire with the landscape designer or construction company engaged with digging the pit.

#### 3.2 Assembly advice

The trampoline is supplied non-assembled. Sufficient helpers will be required to unload the trampoline from the truck and carry it to the installation site.

#### 3.3 Weight

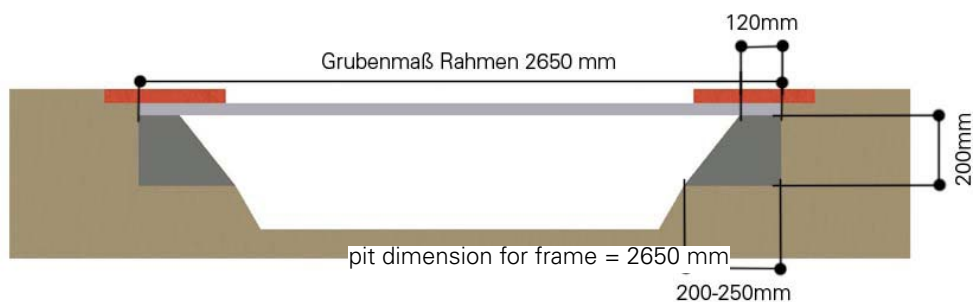
The weight of the assembled trampoline excluding bonded impact protection is approx. 160 kg.

#### 3.4 Installation time following preparation of construction pit

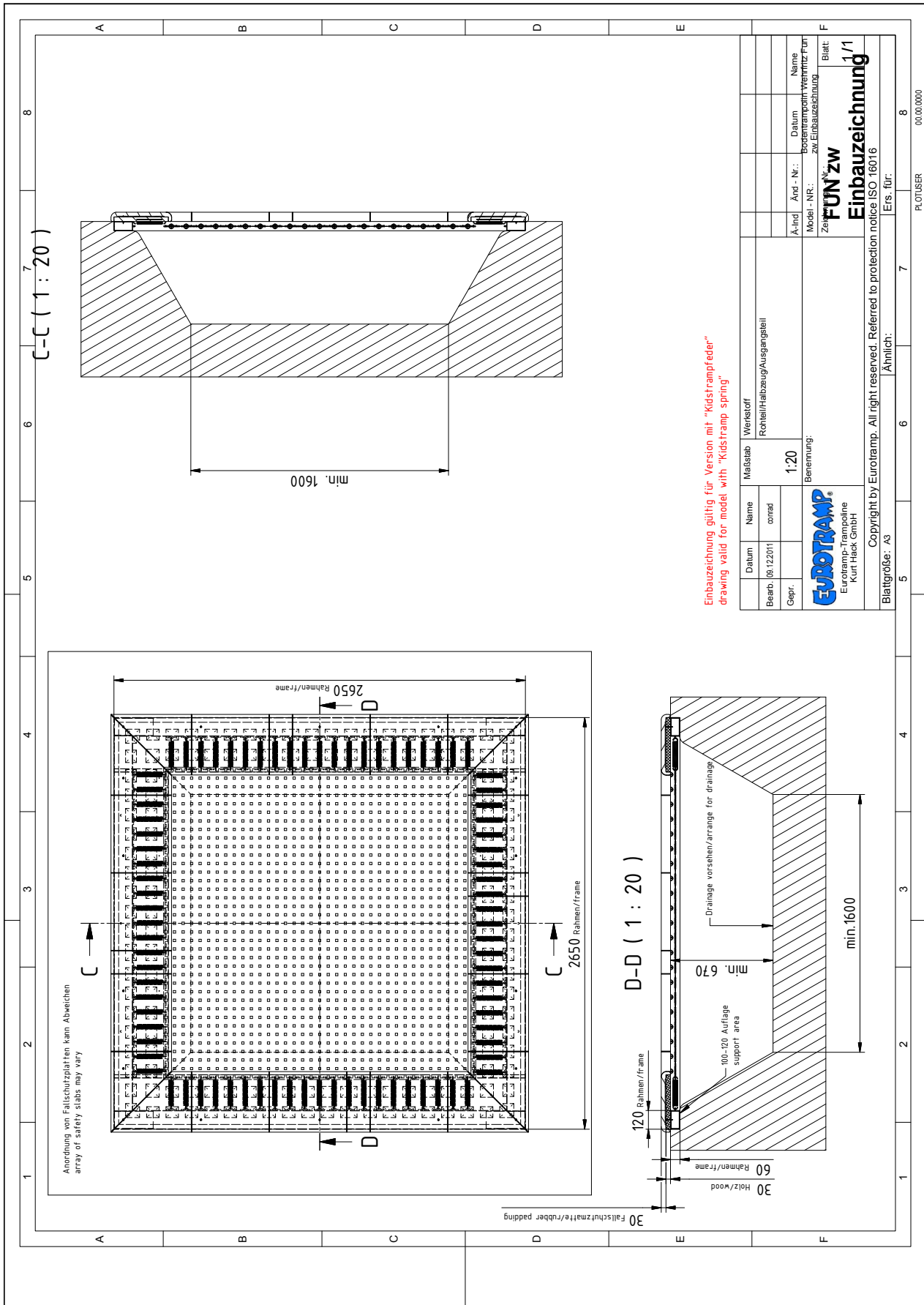
The trampoline is supplied non-assembled. Allow 60 minutes for assembly and installation in the pit. Allow a further 30 minutes for attaching the bonded impact protection.

#### 3.5 Excavating the pit

- The pit should be excavated in accordance with the drawing (see page 3).



- If the ground beneath is unstable (sand), it is essential that the pit edges are reinforced.
- An all-around foundation may be set into the pit upon which the frame parts are then placed, or appropriate base plates should at least be laid in the corner areas.
- The edges of the pit should be excavated to a slight slant in the lower area to reduce soil slippage.
- If it contains an impermeable soil layer, the bottom of the pit should have some form of drainage mechanism (e.g. a gravel layer) to allow water to seep into the ground. Otherwise, with impermeable substrates (clay, cement, etc.), the pit will be susceptible to flooding.





### 3.6 Surrounding area

The formation of the area surrounding the trampoline will depend on the actual conditions at the installation site. Either natural soil fall protection or some other suitable bonded impact protection (dimensioned for a fall height of 100 cm) must be provided.

## 4. Assembly Instructions

### 4.1 Assembling the jumping bed

- Assemble the jumping bed with the embossed side to the top
- Suspend the jumping bed (this should preferably be performed by two people).
- First insert two springs at each corner to fix the bed in position (see figs. 5 and 6).
- Insert springs around the jumping bed.
- First attach the springs to the frame on the longitudinal sides followed by the springs on the face sides. To avoid unnecessary strain, attach springs at opposite sides of the bed at the same time.

### 4.2 Special tools required

No special tools are required to install the trampoline. If you need to change springs use the mounting tool which is supplied with every trampoline.

### 4.3 Assembling the wooden panels

Place the wood panels over the frame and screw in place in the frame using the 6.3 mm x 55 mm self-drilling screws and the bit supplied.

### 4.4 Assembling the impact guard

Attach the impact guard onto the wood face edge of the trampoline using the supplied 5.5 mm x 50 mm wood screws flush with the top edge.

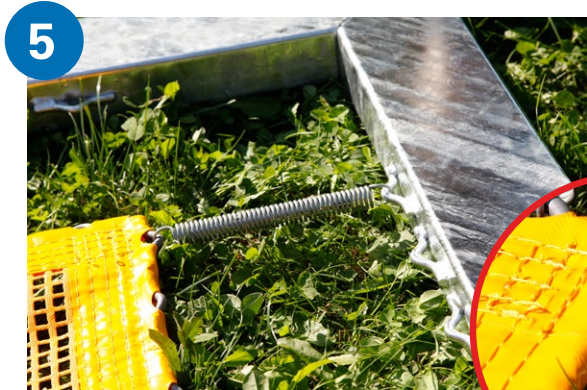
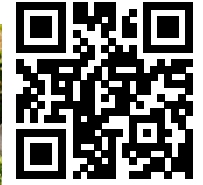
### 4.5 Assembling the bonded impact protection

Put the impact protection plates on the wooden plates and stick them on them punctually. When putting the impact protection plates please start at the corners of the trampoline (s. pictures 12 + 13) and continue with step 2 by adding the straight shaped impact protection plates. To ensure a geometric optics of the impact protection just put the 4 longer impact protection plates with 69 cm length always in the middle of the trampoline sides.

Assembly of the black jumping bed is the same as with the yellow jumping bed!

**TIP!**

Scan QR-Code & get video instructions!



**IMPORTANT:**  
the spring ears should point **downwards!**



7



8



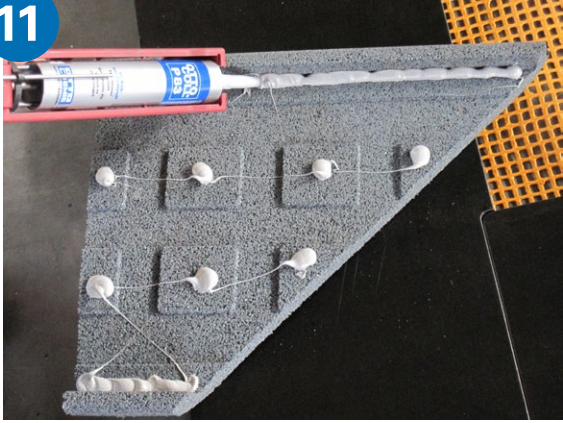
9



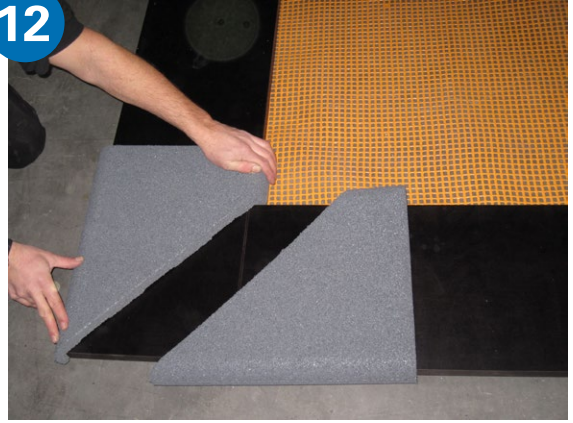
10



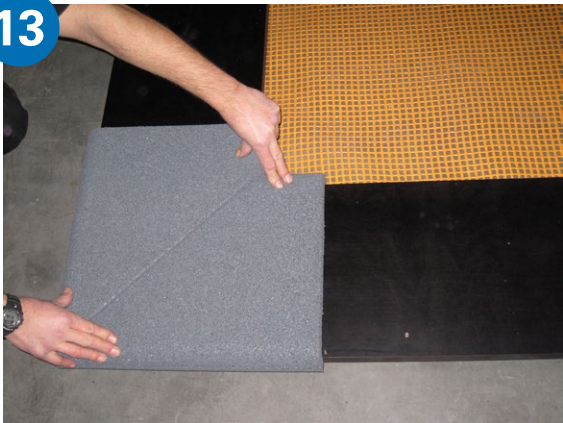
11



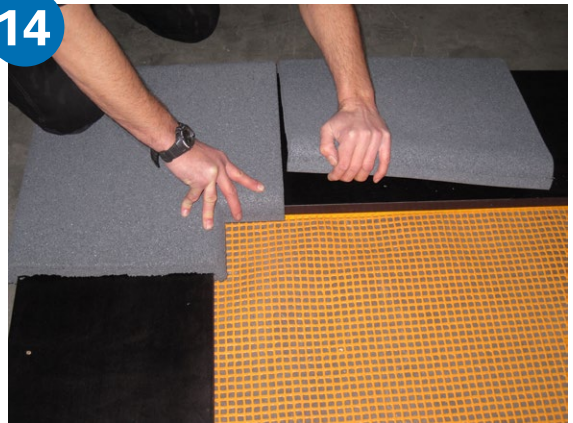
12



13



14



## 5. Safety rules when using the trampoline

To enjoy jumping on a trampoline it is extremely important to avoid accidents and injuries. Therefore the following rules must be observed.

*The most important points:*

- Jump alone as several jumpers at one time poses a big risk.
- Consider your skills as far as condition and motor function are concerned.
- Check out your balance skills before you begin to jump
- Uncontrolled jumping can cause performers to land on the head or neck leading to serious injuries. For this reason, any exercises involving turning in the air (somersaults, front drops, etc.) are strictly forbidden!
- Take extra care in the cold season. However, once the snow has been removed from the jumping bed, there is nothing to stop from using your trampoline in this season too.
- Subjecting the springs to snow loads for long periods will put unnecessary strain on them. For this reason, the snow must be carefully removed on a regular basis or the jumping bed disassembled during the winter months. It is also possible to fit a wooden walk-over cover that protects the jumping bed from the effects of the weather and prevents the trampoline from being used.
- Trampoline jumping is affected by strong gusts of wind.

## 6. Maintenance and repair cycles

### 6.1 Measures

- Substitute missing parts.
- Exchange broken jumping beds.
- Exchange any springs which are overstretched or broken. To find out whether a spring is overstretched just have a look at the spring body and see whether it is equally twined. The spring is also broken when you stretch it and afterwards it does not recover its original form.
- To unhinge the steel springs, please use the mounting tool which is delivered together with the trampoline. Unhinge the springs first at the jumping bed side and then you can put them off at the trampoline frame side. To hinge the springs again it is important that the spring ears point downwards. Fix the single spring at the frame side first and then at the jumping bed side. For doing so use the mounting tool. It is easier to hinge the steel springs at the jumping bed side if you put up the anchor bars of the bed.



## 6.2 Repair cycles

Type of inspection	Frequency	Content
Normal visual inspection	<ul style="list-style-type: none"> <li>• Monthly, if the Wehrfritz FUN is used occasionally</li> <li>• Weekly, if it is used quite a lot</li> <li>• Daily, if it is used very often or if there is a big risk of vandalism</li> </ul>	<ul style="list-style-type: none"> <li>• Visual control of the jumping bed, impact protection and number of springs</li> <li>• Check whether the ground trampoline and its surroundings are clean and whether there are any sharp edges, etc.</li> </ul>
Operational inspection	<p>Every three months if the ground trampoline is used occasionally, every month if it is used a lot.</p>	<p>Additionally to the visual control:</p> <ul style="list-style-type: none"> <li>• Control whether the pit has been filled up with grit or anything else</li> <li>• Control whether there are any defects caused by corrosion</li> <li>• Control whether there are any missing parts</li> <li>• Control whether there has been excessive wearout</li> </ul>
Annual main inspection	Annually	<p>General control whether the ground trampoline is fool-proof. That's why additionally to the visual and operational control you have to check whether</p> <ul style="list-style-type: none"> <li>• The jumping bed is hinged properly</li> <li>• The frame has any fracture or other defect</li> <li>• The steel springs are broken or overstretched</li> <li>• The spring ears point downwards both at the jumping bed side and at the frame side</li> </ul>

## 7. Parts list

Designation	Quantity
Longitudinal support with spring	2
Transverse support with spring	2
Steel springs	72 pieces („Playground“) resp. 84 pieces („Kindergarten“)
Longitudinal wood cover	2
Transverse wood cover	2
Jumping bed	1
Bonded impact protection panels - 8 corner panels - 8 panels 50 cm length - 4 panels 69 cm length	20
Winged self-drilling screws	16
Adhesive for fall protection panels	3

**\* Important for TÜV compliance:**

Only bonded impact protection panels made by Kraiburg must be fitted!

All spare parts available from Eurotramp upon request!

**If you have any further questions please do not hesitate to contact us:**

Eurotramp Trampoline - Kurt Hack GmbH

Zeller Straße 17/1

73235 Weilheim

Tel. +49(0)7023 - 9495-0

Fax +49(0)7023 - 9495-10

E-Mail [eurotramp@eurotramp.com](mailto:eurotramp@eurotramp.com)

[www.eurotramp.com](http://www.eurotramp.com)





Product Service

# ZERTIFIKAT

Nr. Z1A 11 08 30154 016

**Zertifikatsinhaber:** Eurotramp Trampoline  
Kurt Hack GmbH  
Zeller Str. 17/1  
73235 Weilheim  
DEUTSCHLAND

**Prüfzeichen:**

**Produkt:** Spielplatzgeräte  
Spielplatztrampoline

Das Produkt entspricht hinsichtlich der Gewährleistung von Sicherheit und Gesundheit den Anforderungen des deutschen Geräte- und Produktsicherheitsgesetzes § 7 Abs. 1 Satz 2 GPSG. Es kann mit den oben abgebildeten Prüfzeichen gekennzeichnet werden. Eine Veränderung der Darstellung der Prüfzeichen ist nicht erlaubt. Die Übertragung eines Zertifikates durch den Zertifikatsinhaber an Dritte ist unzulässig. Das Zertifikat ist gültig bis zum angegebenen Zeitpunkt, sofern es nicht früher gekündigt wird. Umseitige Hinweise sind zu beachten.

Prüfbericht Nr.: 71373400

Gültig bis: 2016-08-22



Datum, 2011-08-31

  
( Bernd-Michael Neukamm )

Seite 1 von 3



**ZERTIFIKAT**

**Nr. Z1A 11 08 30154 016**

**Modell(e):**

**Kids Tramp: Playground: Art Nr. 97000  
 Kids Tramp: Playground Loop: Art Nr. 97010  
 Kids Tramp: Kindergarten Art: Nr. 97100  
 Kids Tramp: Kindergarten Loop: Art Nr. 97110  
 Kids Tramp Playground groß: Art Nr. 97500  
 Kids Tramp Kindergarten groß: Art Nr. 97600500  
 Bodentrampolin Fun: Art Nr. 97610, 94500**

**Kenndaten:**

Artikelname	Rahmengröße	Art.Nr.	Tuchart	Tuchgröße
KidsTramp Playground	150x150 cm	97000	drahtver- stärktes Gittergewebe	107x107cm
KidsTramp Playground Loop	150x150 cm	97010	drahtver- stärktes Gittergewebe	107x107cm

weitere Daten siehe Anlage!

**Geprüft nach:**

EN 1176:2008

**Produktions-  
stätte(n):**

30154